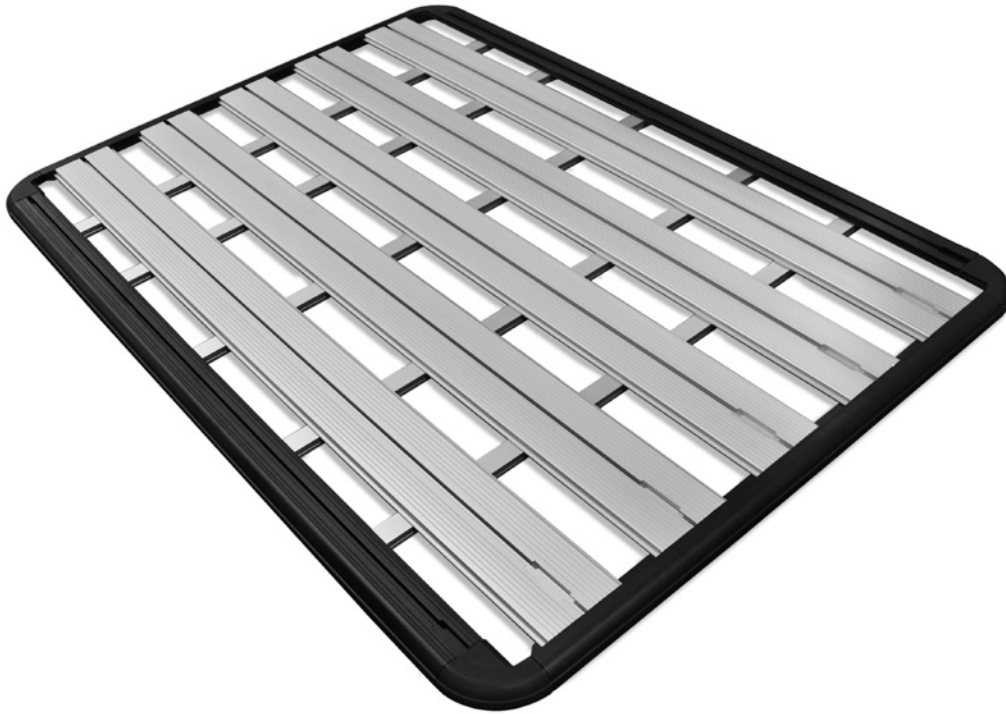




# ROOF RACK



AEV30209AC  
*Last Updated: 07/02/18*

INSTALLATION GUIDE



## NOTE: ROOF RACK MAY DEGRADE SATELLITE RADIO RECEPTION

### PLEASE READ BEFORE YOU START

TO GUARANTEE A QUALITY INSTALLATION, WE RECOMMEND READING THESE INSTRUCTIONS THOROUGHLY BEFORE BEGINNING ANY WORK. THESE INSTRUCTIONS ASSUME A CERTAIN AMOUNT OF MECHANICAL ABILITY AND ARE NOT WRITTEN NOR INTENDED FOR SOMEONE NOT FAMILIAR WITH AUTO REPAIR.

INCLUDED PARTS	QTY	REQUIRED TOOLS
Aluminum Planks	5	Basic hand tools
Right Side Rail	1	Rivet gun
Left Side Rail	1	
End Rails	2	
Corners	4	
Corner Closeout Plate	4	
Corner End Rail Connectors	4	
Aluminum Crossbars	5	
Roll Bar Brackets	4	
Satellite Antenna Bracket	1	
Stantion Assemblies	4	
AEV logo Decal	4	
Alcohol Swab	1	
Hardware		

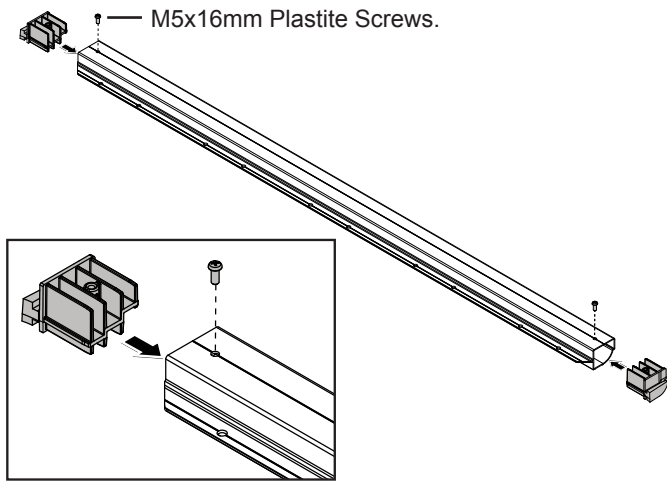
Note: The included parts shown below are not necessary for this application and may be discarded.



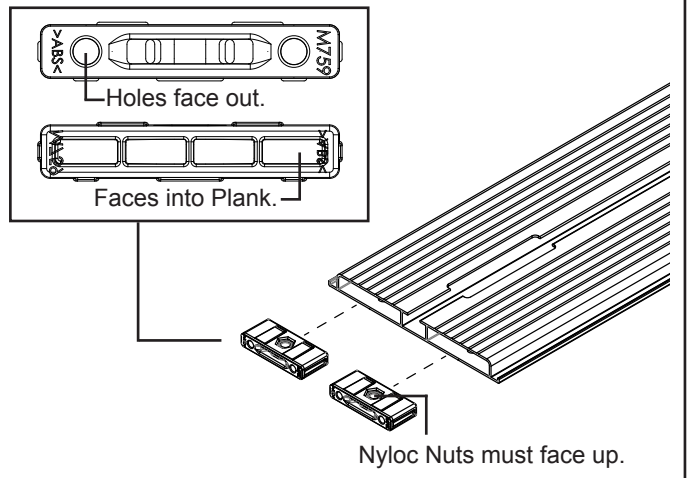


## PART I. PLATFORM ASSEMBLY

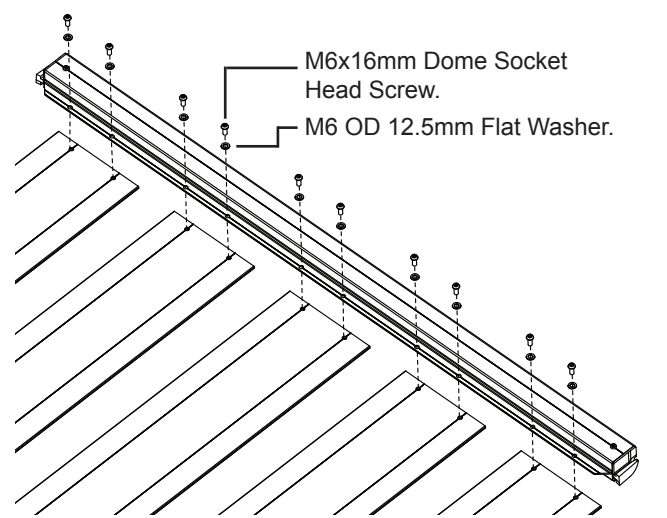
- 1** Fit Corner T Mouldings to the Frame End extrusions. A rubber mallet can be used to carefully tap the Moulding in place.



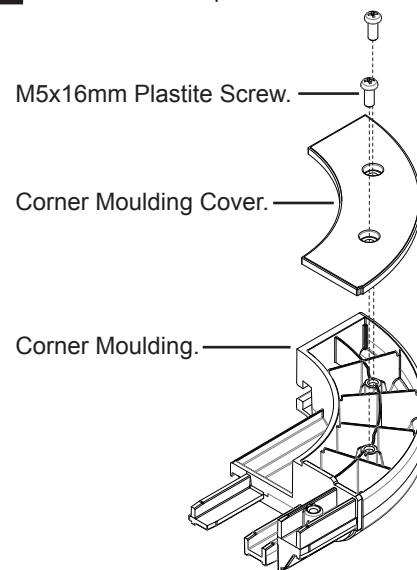
- 2** Fit the Plank Inserts into end of plank at both ends. Orientation of inserts is critical. Carefully tap the Inserts into place with a rubber mallet.



- 3** Lay planks upside down on floor, lower End Extrusions onto planks and fasten together using hardware supplied. Do the same for the other end.

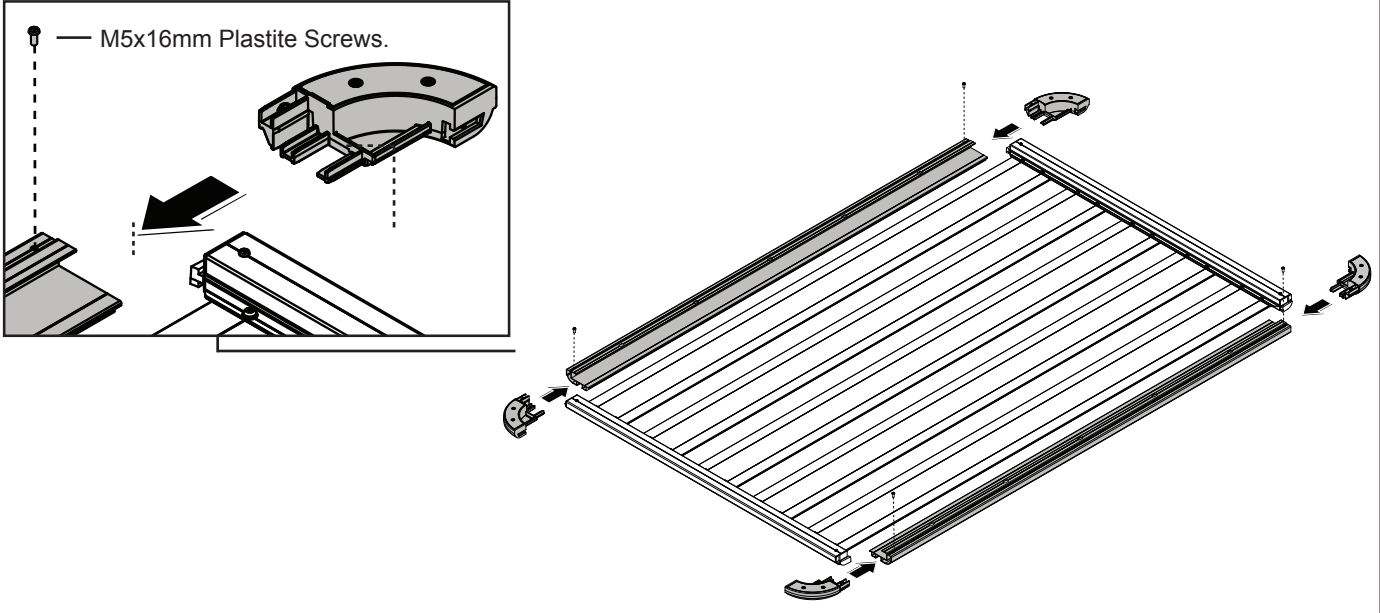


- 4** Fit all four cover plates to corner mouldings as shown.

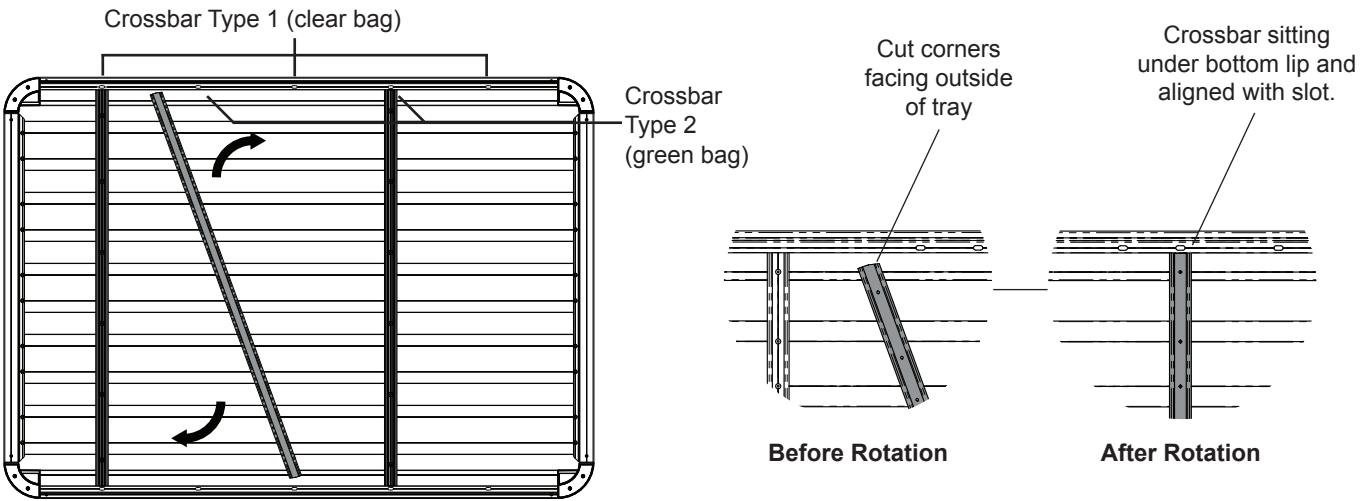




- 5** Place side extrusions upside down in position, slide corner mouldings onto T moulding and into extrusion simultaneously. Screw fix in position.

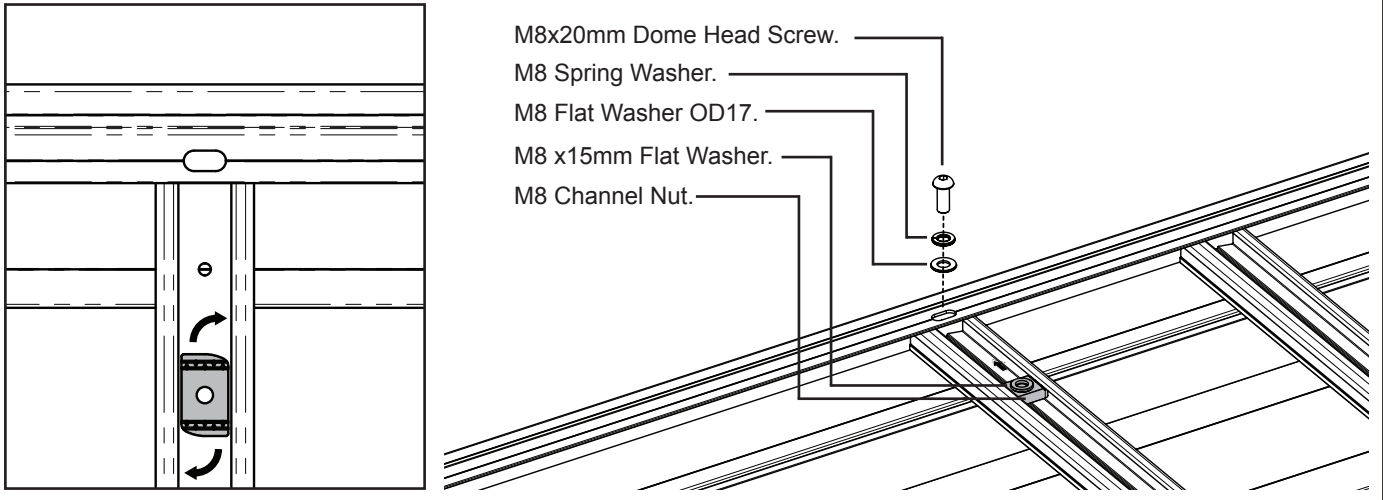


- 6** With the assembly still upside down, place the Crossbars in at an angle and rotate under the lip of the Frame Side Extrusions. Note: Be sure to use the correct order of Crossbars for the installation as seen below ( the AEV Type 1 Crossbars will be packaged in green plastic to help in identification).

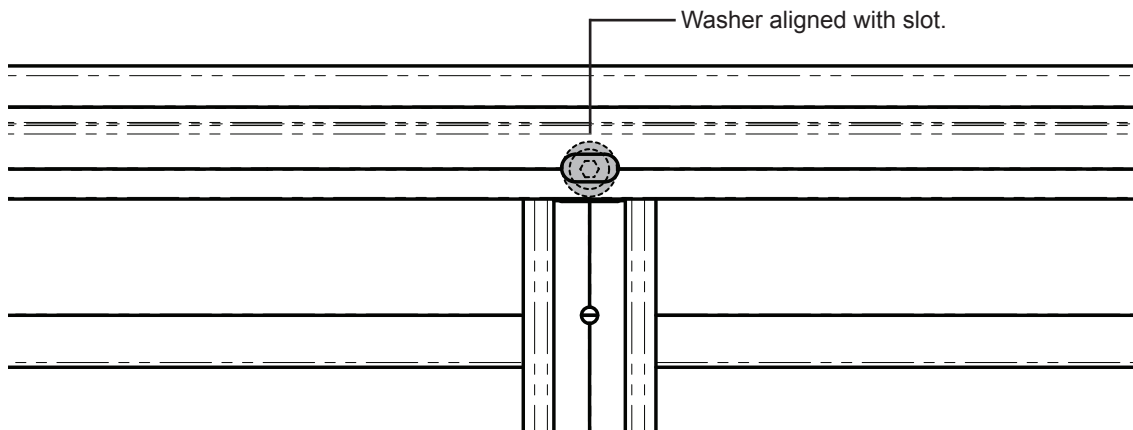




- 7** Place channel nut within the crossbar as shown below and rotate 90 degrees. Place M8x15mm Flat Washers on top of the channel nut and slide both to the outside of the tray so they sit under the slot. Proceed to fit remaining hardware as shown but do not tighten at this stage. Repeat this process for both ends of each crossbars.



- 8** Align crossbars so that the washer sits centred over the slot, you may need to tap the crossbar into position with a rubber mallet. Once the crossbar is in position tighten bolt with allen key provided.





9

Install the Alloy Locking Tabs. Be aware of the orientation of the of the Single Alloy Tabs on the sides of the Platform.

Note the orientations of the Single Locking Alloy Tabs.

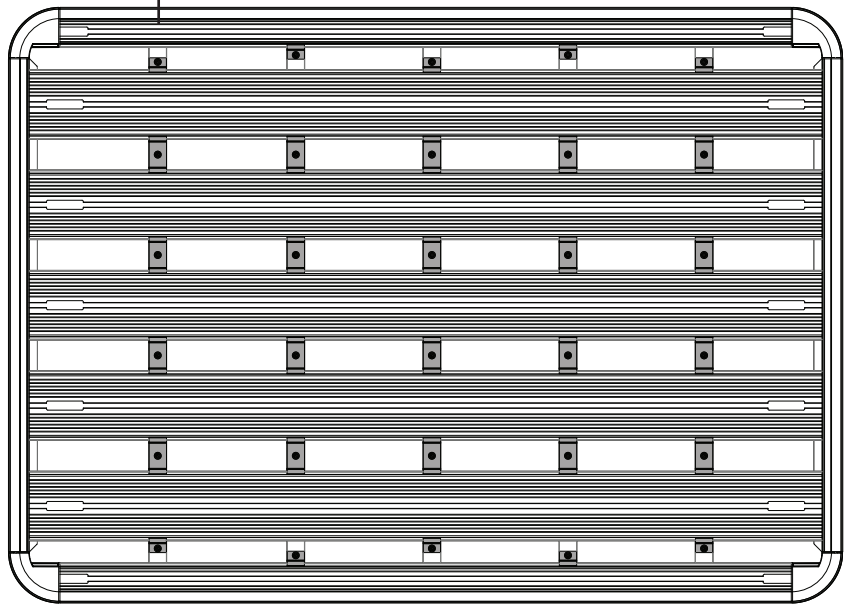
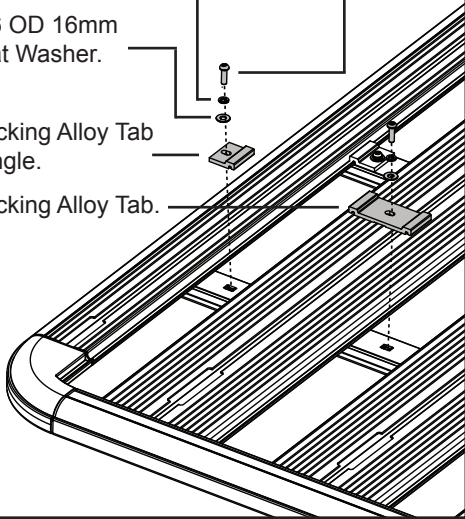
M6x20mm Security Head Screw.

M6 Spring Washer.

M6 OD 16mm  
Flat Washer.

Locking Alloy Tab  
Single.

Locking Alloy Tab.





## PART II. INSTALLING ROLL-BAR BRACKETS

1. Remove hard top.
2. Remove sound bar.
3. Unzip roll bar padding and pull back to expose factory brackets (fig. 5.1 and 5.2). Remove bolts (shown in gray) and save. On the front, right side, detach the satellite radio antenna (if equipped) from its factory location and disconnect the wire connector. Be sure to save hardware.

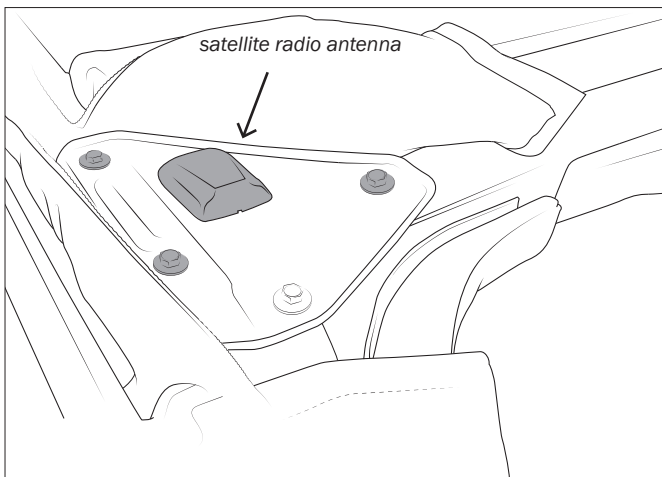


Figure 5.1 front

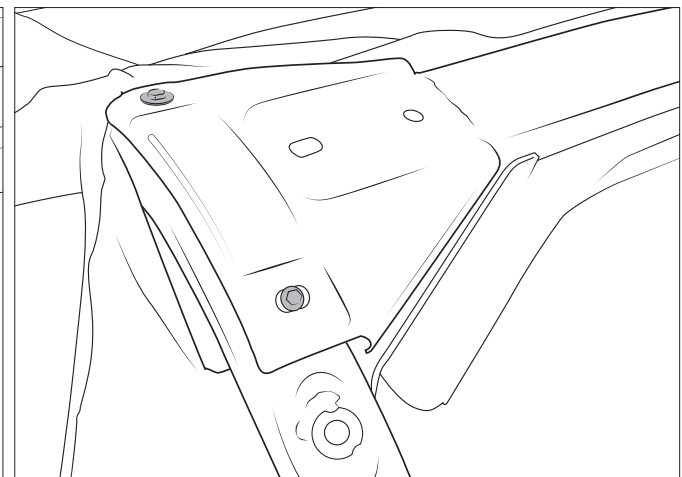


Figure 5.2 rear

4. Replace roll bar padding.
5. Position AEV brackets over roll bar padding to align with the corresponding holes in the roll cage from the bolts previously removed. Mark the hole's position on the padding and cut through the pad using a sharp awl or utility knife to allow access to them.
6. Place AEV brackets in position and secure loosely with the factory bolts removed previously (fig. 7.1 and 7.2). DO NOT tighten until all adjustments are made in the following steps.
7. Use the measurements in Figure 8 to adjust the bracket positions.

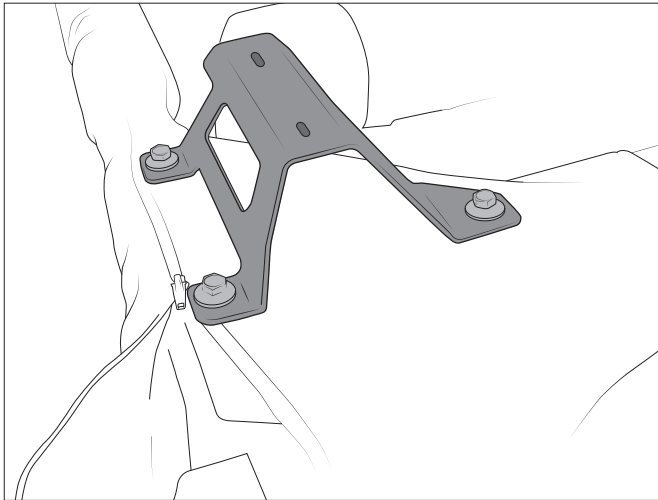


Figure 7.1 front

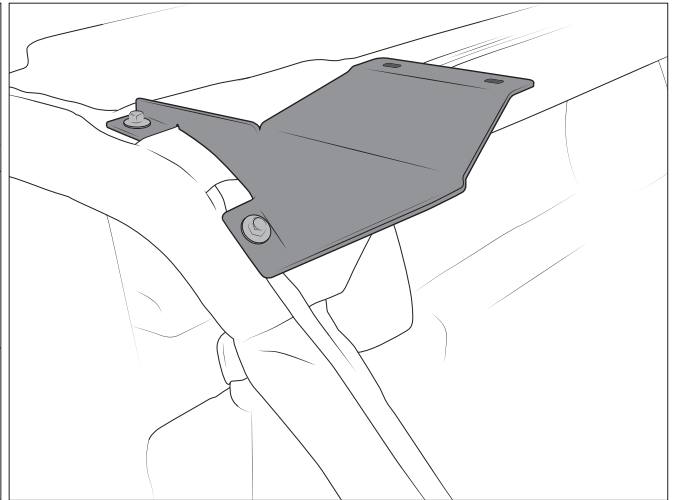


Figure 7.2 rear

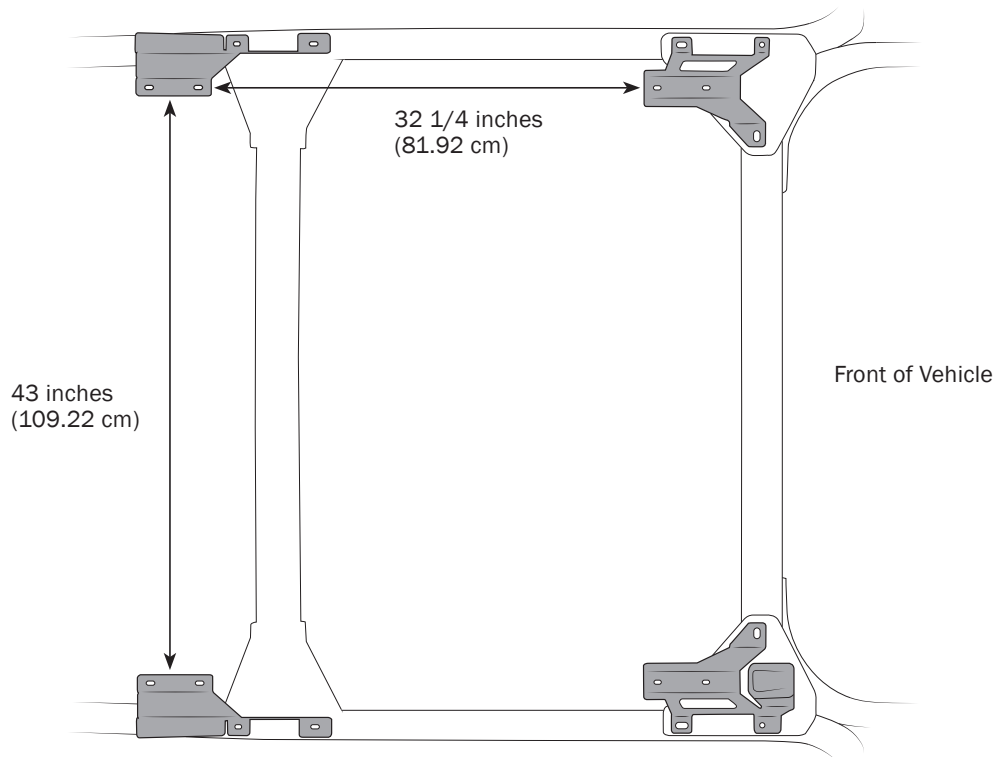


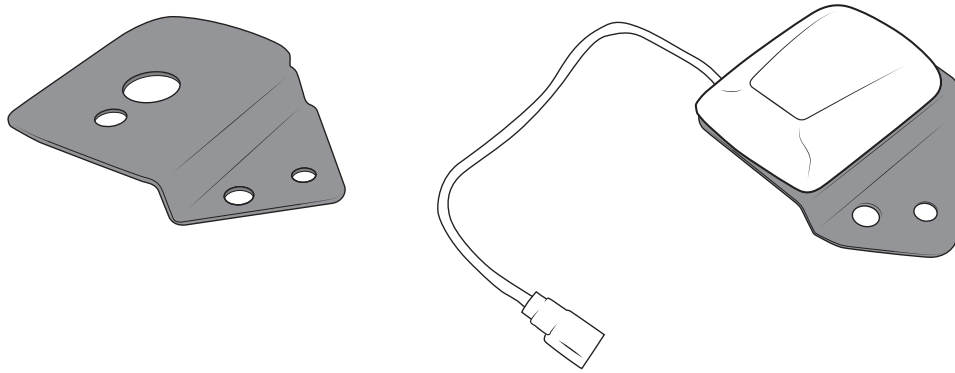
Figure 8





## PART III. RELOCATING SATELLITE ANTENNA

1. Attach satellite radio antenna, using its original hardware, to the AEV provided bracket.



2. Remove all trim from passenger (right) side B-pillar and floor
3. Locate antenna wiring, and remove from B-pillar at all attachment points.
4. Relocate wiring up the A-pillar (windshield frame)
5. Once proper routing has been established, excess wiring will need to be secured out of harm's way (fig. 9).



Figure 9



6. Fasten AEV bracket with satellite radio antenna to the windshield frame with the supplied bolt, nut, and washer through existing hole in the top of the A-pillar (fig. 10). **Pre-2013 JKs may or may not have this existing hole.** If your vehicle does not, you will need to drill a 5/16" hole. The remaining hole in the AEV bracket should line up with the existing hole in the A-pillar for the plastic fir-tree that secures the A-pillar trim. You can use this hole to locate the bracket on the A-pillar for drilling location.
7. Reinstall factory trim.

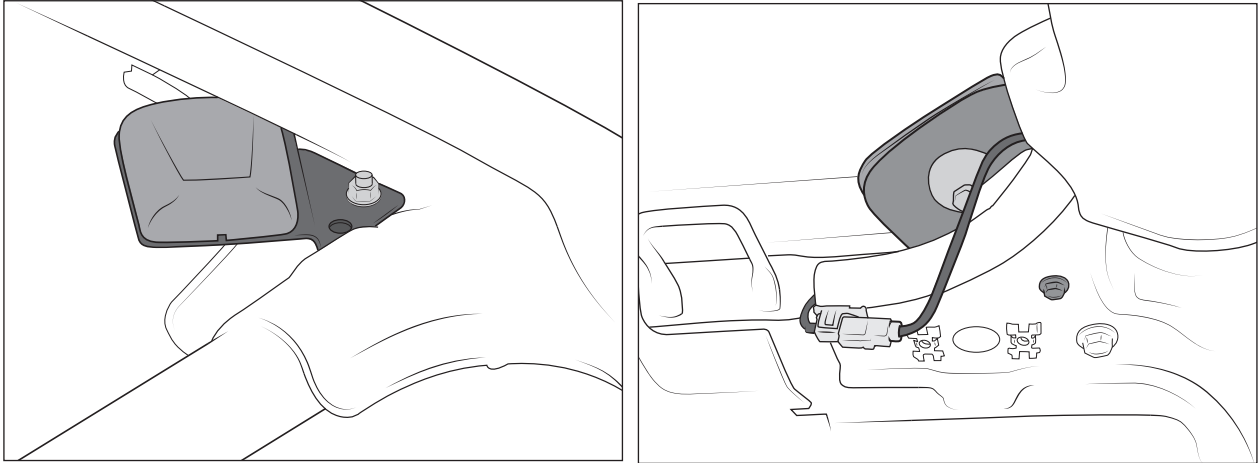


Figure 10



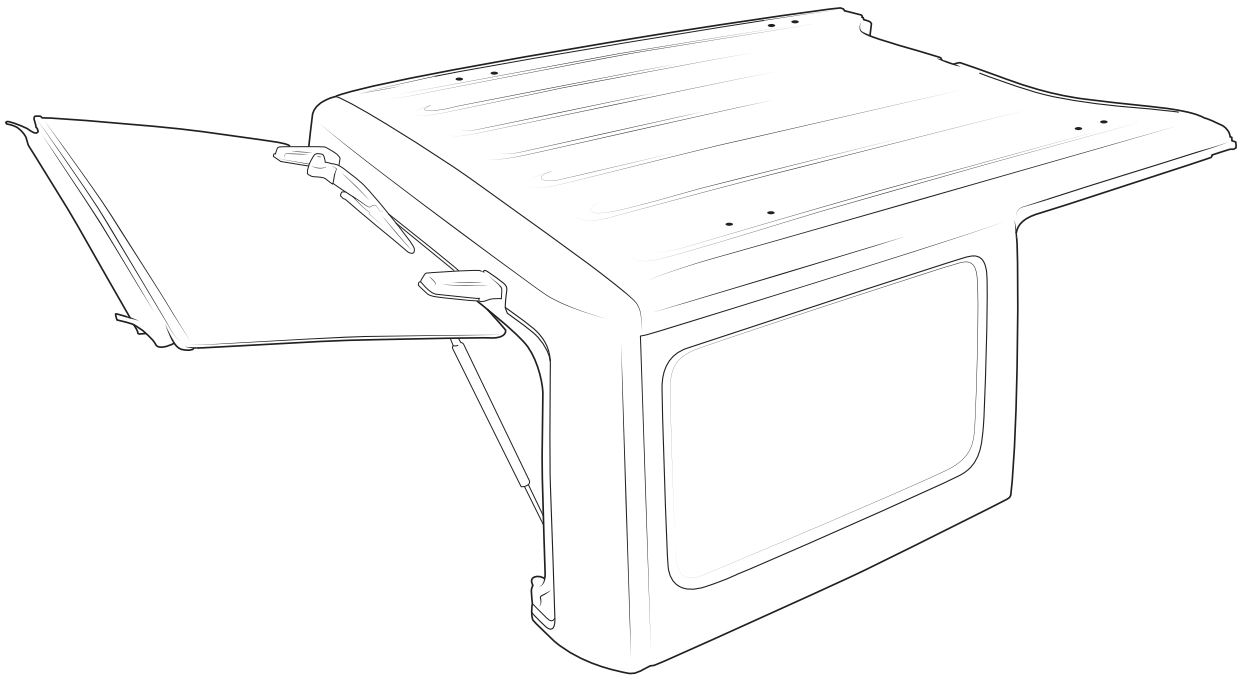
## **PART IV. ATTACHING PLATFORM TO HARD TOP**

### **A. MARKING HARD TOP**

1. Reinstall Hard top on Vehicle. Top should be completely secured with all factory fasteners to ensure proper position for drilling holes.
2. Press brackets up flush to the inside of the hard top and tighten all accessible fasteners.
3. Using the holes in the bracket, mark drilling positions on the inside of the hard top (8 holes).

### **B. DRILLING HARD TOP**

1. Remove hard top (you can now tighten any bracket fasteners that were not accessible before).
2. Drill pilot holes at marked locations with a small drill bit.
3. Using a 5/16" drill bit, drill final holes through hard top.





### C. ASSEMBLE STANTIONS

1. Pre-Assemble all four stantions as shown (fig. 11) leaving finger tight at this time. *NOTE: Additional hardware is included that is not required for this application.* Adhere the adhesive backed foam to the stantion foot, cut holes for the bolts to pass through, and trim tight to foot. Adhere the AEV Logo Decals to the stantions using the supplied alcohol swab to first clean the surface.
2. Reinstall Hard top on Vehicle. Top must be completely secured with all factory fasteners.
3. Position stantions on hard top inserting bolts through the newly drilled holes.
4. Working from the inside of the vehicle, fasten lock nuts onto stantion bolts and finger tighten

### D. ATTACH PLATFORM

1. Lift platform onto vehicle. Channel cutouts should be at the rear of the vehicle.
2. Insert stantion channel nuts into platform cross bars. Stantions connect to crossbars #1 and #4 if counting from the rear of the vehicle.
3. Center platform Left and Right over vehicle.
4. Tighten all fasteners, leaving the safety allen head screw for last.
5. Reinstall sound bar.

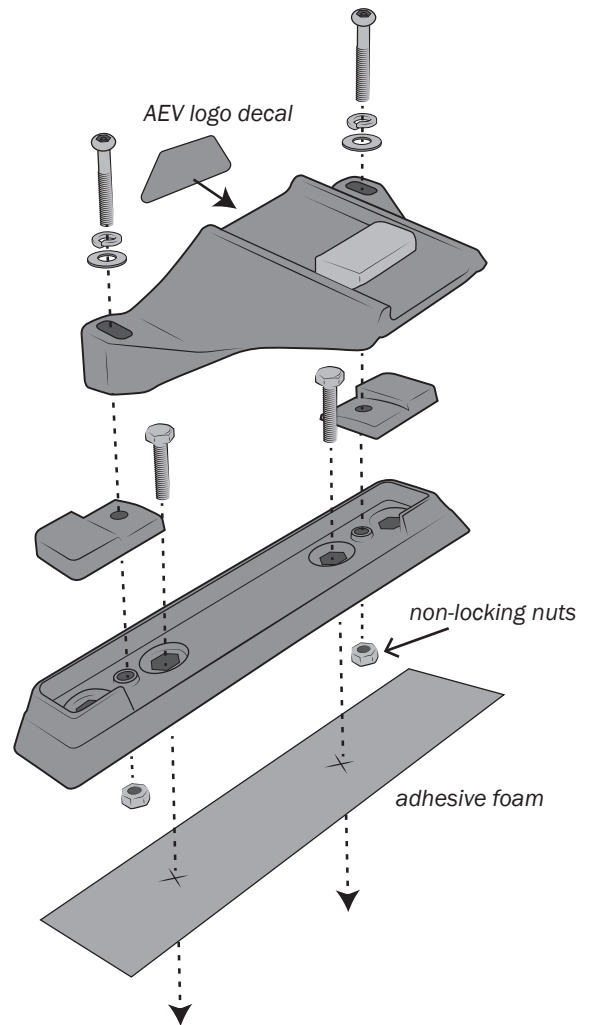


Figure 11



## **IMPORTANT INFORMATION:**

**Maximum carrying capacity: AEV can not recommend a weight carrying capacity. Refer to your Jeep owner's manual.**

It is essential that all bolt connections are checked after driving a short distance when you first install your AEV Roof Rack. Bolt connections should be checked again at regular intervals (probably once a week is enough, depending on road conditions, usage, loads, and distances travelled).

Make sure to fasten your load securely. Please ensure that all loads are evenly distributed and that the center of gravity is kept as low as possible.

### **USE ONLY NON-STRETCH FASTENING ROPES OR STRAPS.**

#### **SENSITIVITY TO CROSSWINDS BEHAVIOR IN CURVES AND BRAKING.**

The handling characteristics of the vehicle change when you transport a load on the roof. For safety reasons, we recommend you exercise extreme care when transporting wind resistant loads, special consideration must be taken into account when braking.

**Note for dealers and fitters.** It is your responsibility to ensure instructions are given to the end user or client.

## **COMMENTS OR QUESTIONS?**

American Expedition Vehicles

[www.aev-conversions.com](http://www.aev-conversions.com)

email: [tech@aev-conversions.com](mailto:tech@aev-conversions.com)

ph: 248.926.0256

**Be sure to visit our forum at: <http://forum.aev-conversions.com>**