

READ ME !

Thank you for purchasing a Front Runner Side Mount Ladder For Jeep JL / JK

Before you start, take a moment to familiarize yourself with the Fitting Instructions and the included components.

Refer to Page 2 for a list of all the components, quantities and tools required.

IMPORTANT WARNING!

IT IS CRITICAL THAT ALL FRONT RUNNER PRODUCTS BE PROPERLY AND SECURELY ASSEMBLED AND ATTACHED TO YOUR VEHICLE. IMPROPER ATTACHMENT COULD RESULT IN AN AUTOMOBILE ACCIDENT, AND COULD CAUSE SERIOUS BODILY INJURY OR DEATH. YOU ARE RESPONSIBLE FOR ASSEMBLING AND SECURING ALL FRONT RUNNER PRODUCTS TO YOUR VEHICLE, CHECKING THE ATTACHMENTS PRIOR TO USE, AND PERIODICALLY INSPECTING THE PRODUCTS FOR ADJUSTMENT, WEAR AND DAMAGE. THEREFORE, YOU MUST READ AND UNDERSTAND ALL OF THE INSTRUCTIONS AND PRECAUTIONS SUPPLIED WITH YOUR FRONT RUNNER PRODUCT PRIOR TO INSTALLATION OR USE. IF YOU DO NOT UNDERSTAND ALL OF THE INSTRUCTIONS AND CAUTIONS, OR IF YOU HAVE NO MECHANICAL EXPERIENCE AND ARE NOT THOROUGHLY FAMILIAR WITH THE INSTALLATION PROCEDURES, YOU SHOULD HAVE THE PRODUCT INSTALLED BY A PROFESSIONAL INSTALLER OR OTHER QUALIFIED PERSONNEL.

NOTE: Front Runner will not be responsible for any damage caused by the failure to install the product according to these instructions.

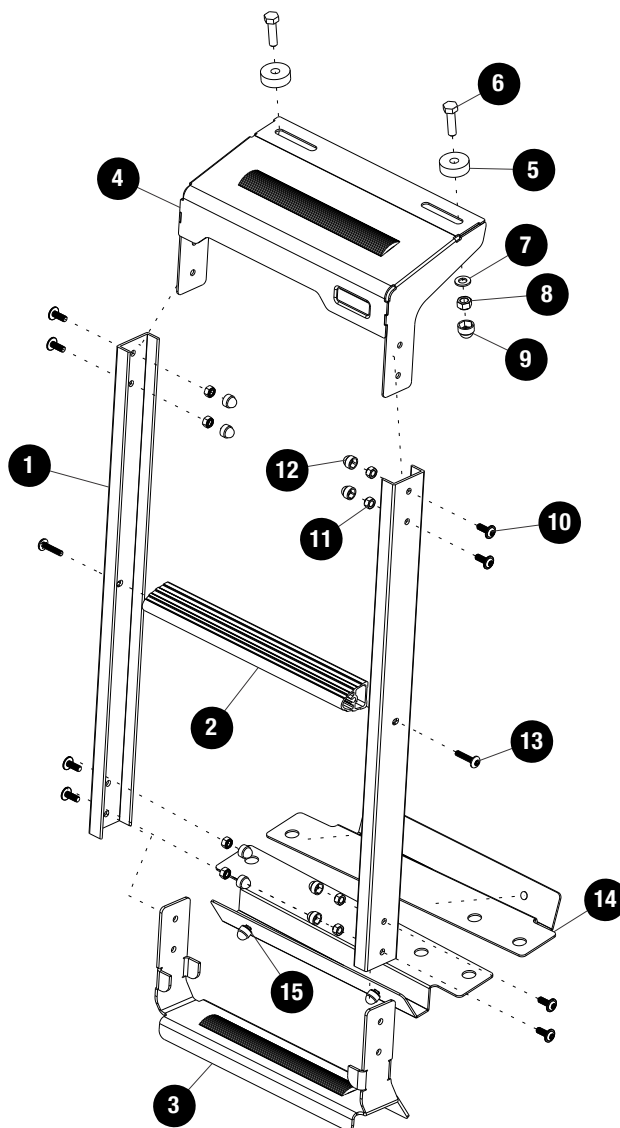
Please call us if you have any questions about the installation of this product.

**1 GET ORGANIZED****IN THE BOX**

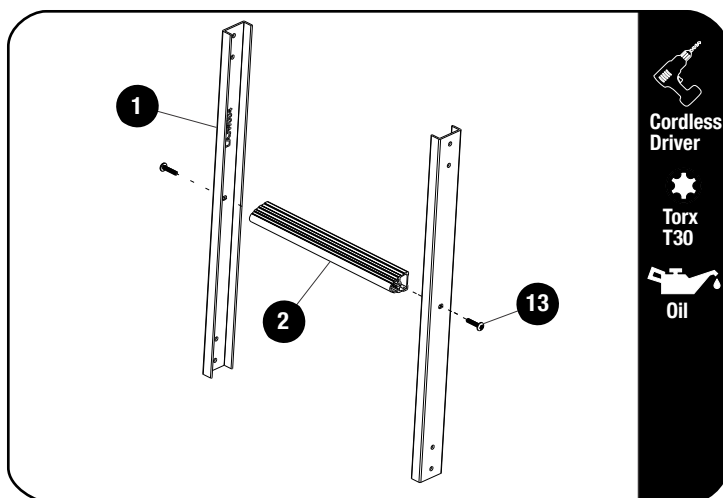
1	2 X	Ladder Sides
2	1 X	Ladder Step
3	1 X	Ladder Bottom Mounting Bracket
4	1 X	Top Mounting Bracket
5	2 X	10mm Spacer
6	2 X	M8X20 Hex Bolt
7	2 X	M8X16X1.6 Flat Washer
8	2 X	M8 Nyloc Nut
9	2 X	M8 Nut Cap
10	8 X	M6X16 Flange Button Head Screw
11	10 X	M6 Nyloc Nut
12	10 X	M6 Nut Cap
13	2 X	M6X25 Thread Forming Screw
14	2 X	Bottom Mounting Bracket LH & RH
15	2 X	M6X12X1 Flat Washer

TOOLS NEEDED10mm
13mmTorx
T30
T505mm
6mm

Oil

Cordless
Driver**FIGURE 1.1**

2.1

Cordless
DriverTorx
T30

Oil

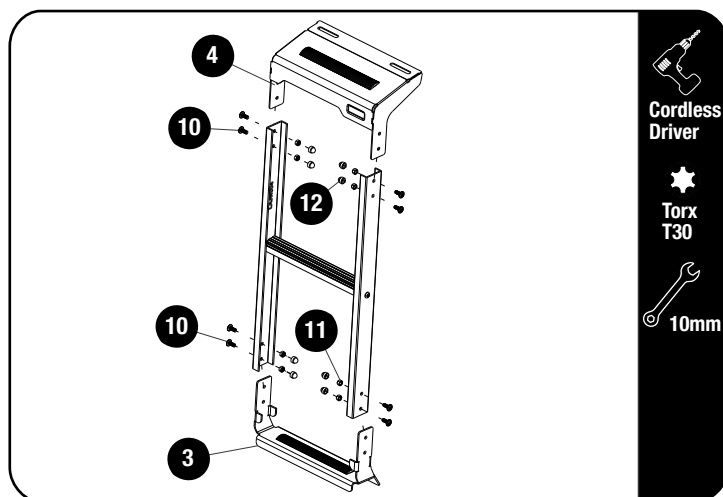


Assemble the Ladder Steps (Item 2) to the Ladder Sides (Item 1) using the M6 x 25 Thread Forming Screws (Item 13).



NOTE: These are thread forming screws, add some oil to the screw and take caution when using a cordless drill to assemble the ladder sides to the ladder steps.

2.2

Cordless
DriverTorx
T30

10mm



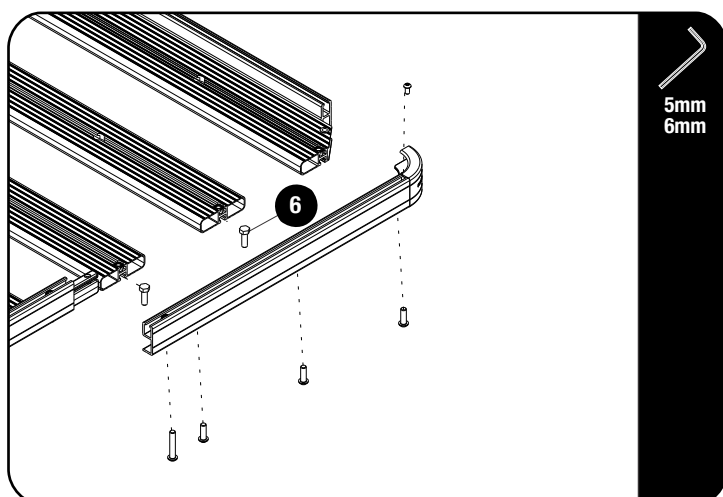
Assembly the Top Mounting Bracket and Bottom Mounting Bracket (Item 3 & 4) to the assembly done in step 2.1 using M6 x 16 Flanged Button Head Bolts (Item 10) and M6 Nyloc Nuts (Item 11) and fully tighten. Place the M6 Nut Caps (Item 12) over the M6 Nyloc Nuts.



Tightening Torque:

M6 : 8-10Nm / 5.9 ft lb - 7.38 ft lb

2.3

5mm
6mm

Decide which side of your Jeep you would like to fit the Side Mount Ladder. Note that the short section of the Rack Side Profile is not always at the rear of the vehicle.

Remove the Corner and rear Side Profile on your Front Runner Roof Rack and slide a M8 x 20 Hex Head Bolts (Item 6) into the second and third slat from the rear of your rack as shown in figure 2.3. Refit the Side Profile and Corner.

2.4



Remove both Freedom panels from the Jeep

2.5




Cordless
Driver


Torx
T50



Remove the two M8 bolts holding the front of the roof in place using a T50 Torx.

2.6




Cordless
Driver


Torx
T50



Remove the six M8 bolts holding the Rear of the roof in place using a T50 Torx.

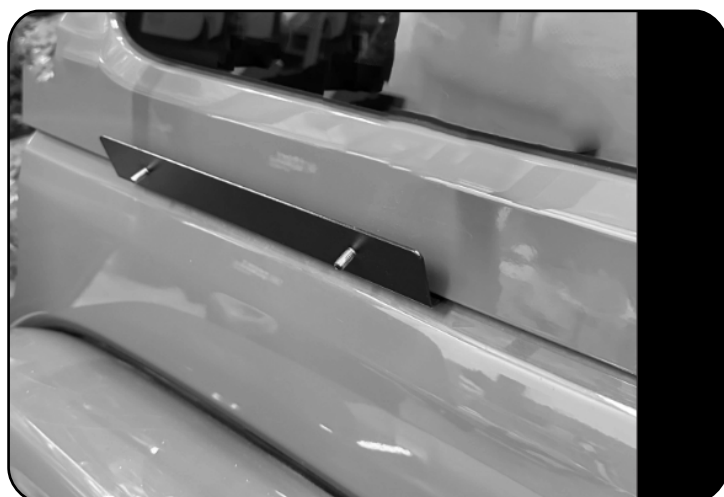
Keep these Bolts in a safe place for reassembly.

2.7



Remove the fasteners securing the internal rack mounts to the rollbar. Four on rear mount and two on mid mount.

2.8



With the help of a friend, Lift the Roof just enough to slip in the Bottom mounting bracket between the Roof and Body.

Line up the Holes in the bottom mounting bracket with the roof fixing holes.

With the Bracket in place carefully set down the Roof back onto the Body.

Refit all the Bolts removed for the roof and Roof Rack removed earlier.

2.9



Place the tube spacers (Item 5) over the two top holes on the top mounting bracket and place and fit the top bracket to the bolts inserted in the rack T slots earlier. Place two washers and nyloc nuts to hold in place

2

FIT AND SECURE

2.10



Line up the ladder with the Bottom mounting Bracket.

Loosely assemble the Ladder to the Bottom mounting Bracket Using M6 Nyloc Nut and M6x12x1 Flat washer (Item 10 & 15).

Align the ladder to ensure its straight.

Fully Tighten the M8 Nyloc Nuts and M6 Nyloc Nuts.

Place M8 and M6 Nut Caps on the M8 and M6 Nyloc Nuts.



Tightening Torque:

M8 : 15-20Nm / 11.06 ft lb - 14.75 ft lb

M6 : 8-10Nm / 5.9 ft lb - 7.38 ft lb

2.11



3

FINISH

Congratulations! You did it. Take a step back and admire your work!

4

INSTALL OTHER VEHICLE AND RACK ACCESSORIES

Now's the time to visit your favorite Front Runner Dealer in person or online.

Be sure to tag us. We love to see our gear in action! #FrontRunnerOutfitters #BornToRoam

Share your adventures on:

