



## Installation Instructions - Side Window Air/Rain Deflectors

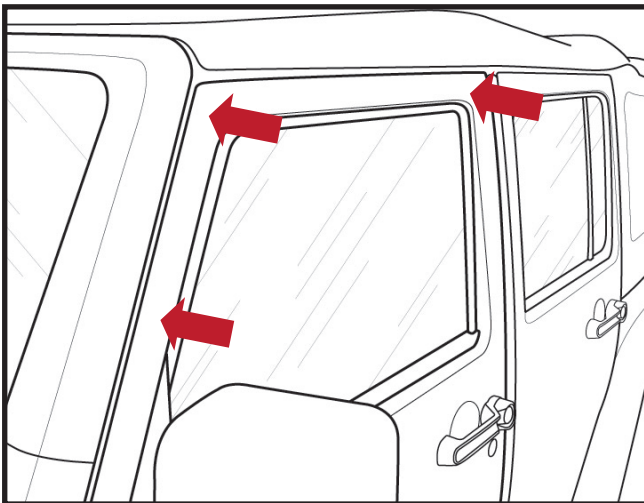
**Note:** Application and product may vary from illustrations.

**Caution:** Before driving, ensure that all deflectors are secured properly.

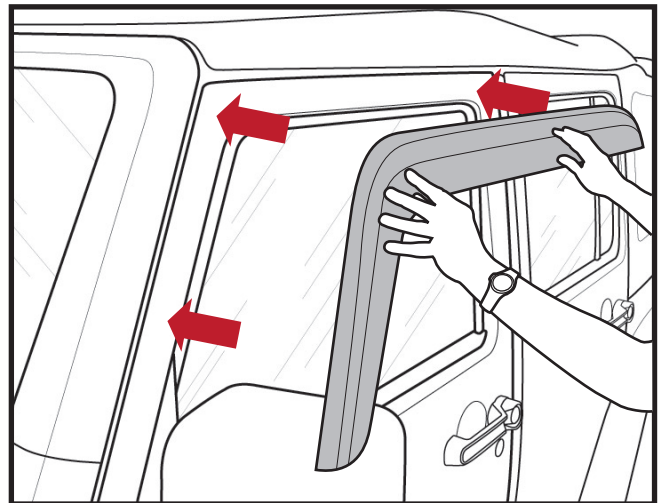
Please read all instructions before installation of Wind/Rain Deflectors

### Preparations Before Installation

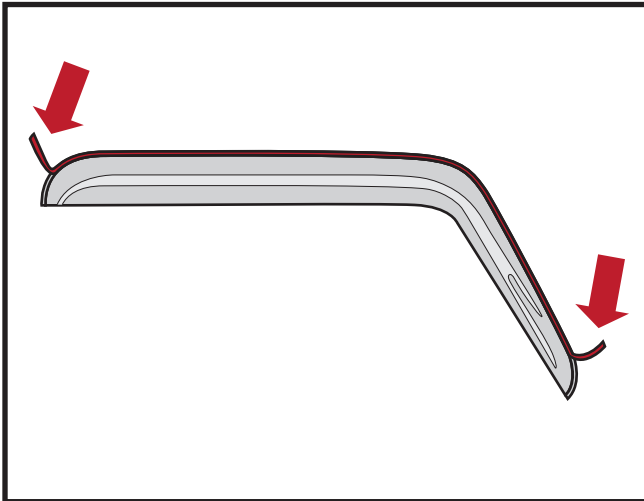
- Check and determine if Wind/Rain Deflectors are the correct fit for your vehicle.
- Wash and Clean all mounting surfaces of the vehicle using Isopropyl Alcohol (Rubbing Alcohol).
- To ensure proper bond apply only when temperatures of mounting surfaces is between 65-110°F.
- Be sure all mounting surfaces are dry before installation.



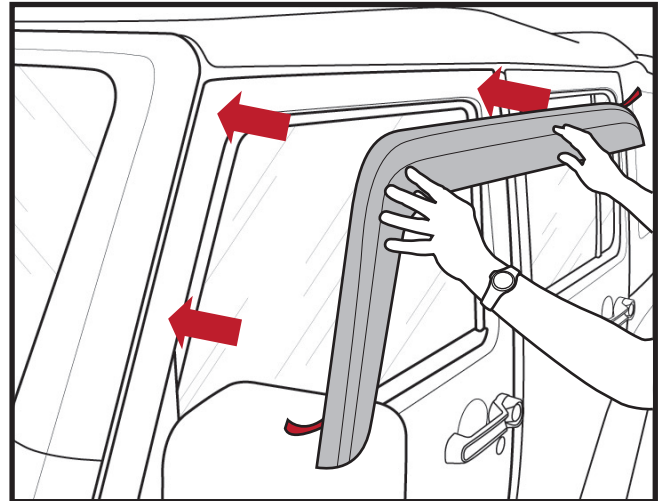
**STEP 1** - Clean the painted surface where the deflector will be attached using Isopropyl Alcohol (Rubbing Alcohol).



**STEP 2** - Hold and position deflector to determine mounting position.

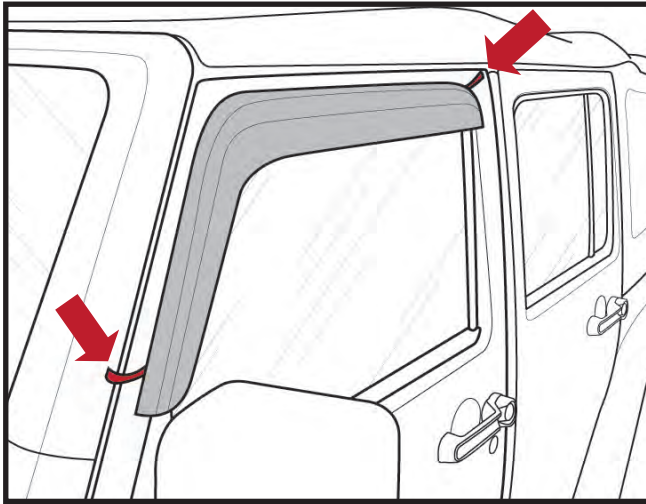


**STEP 3** - Remove 2" of tape liner from each end of the deflector.

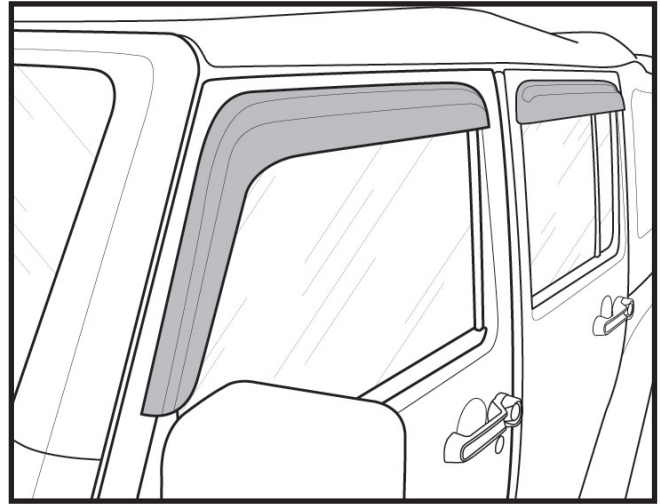


**STEP 4** - Place the deflector in a desired location on the door.

**Continue to Next Page**



**STEP 5** - Once the deflector is positioned, carefully pull and remove the tape liner. Apply firm pressure along mounting surfaces to secure.



**STEP 6** - Apply same methods to the rear deflectors (if applicable).

## Safety Information

- CAUTION - Before driving, check and ensure that all deflectors are properly mounted and secured to vehicle.
- Periodically check and ensure that all deflectors are properly mounted and secure to vehicle.

For Technical Assistance Contact:  
Omix-Ada Tech Support  
Phone: 1-800-449-6649  
Email: [techsupport@omix-ada.com](mailto:techsupport@omix-ada.com)  
Web: [www.Omix-Ada.com](http://www.Omix-Ada.com)

Omix-Ada © 2011